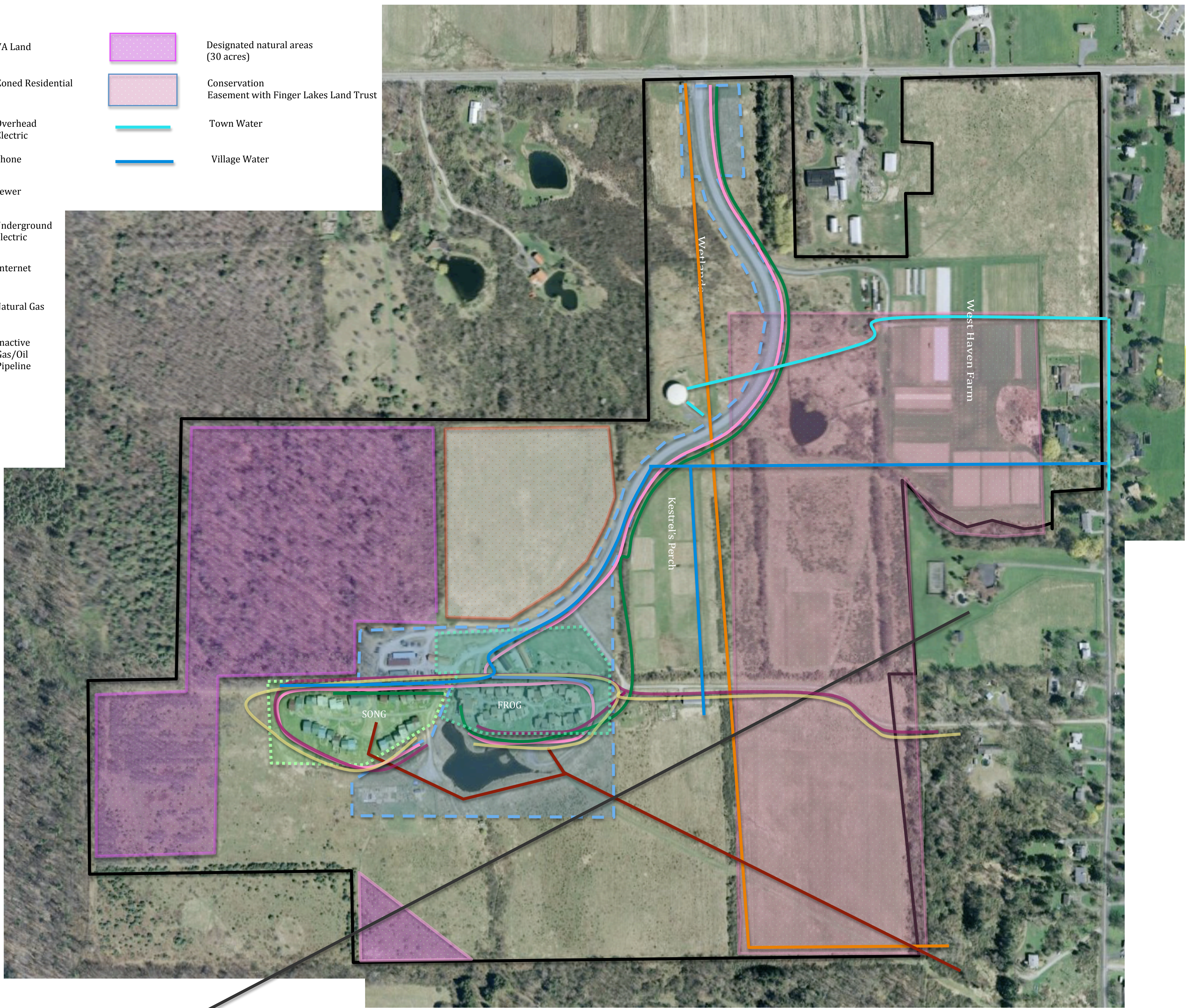


- | | | | |
|--|---------------------------|--|--|
| | VA Land | | Designated natural areas (30 acres) |
| | Zoned Residential | | Conservation Easement with Finger Lakes Land Trust |
| | Overhead Electric | | Town Water |
| | Phone | | Village Water |
| | Sewer | | |
| | Underground Electric | | |
| | Internet | | |
| | Natural Gas | | |
| | Inactive Gas/Oil Pipeline | | |



ECOVILLAGE AT ITHACA
SITE ASSESSMENT & ANALYSIS SUMMARY MAP FOR BOUNDARIES AND INFRASTRUCTURE
BY THE LAND PARTNERSHIP COMMITTEE & KARRYN OLSON-RAMANUJAN
SPRING 2010

****DRAWINGS INTENDED TO SHOW RELATIONSHIPS BETWEEN ELEMENTS, NOT TO SCALE**